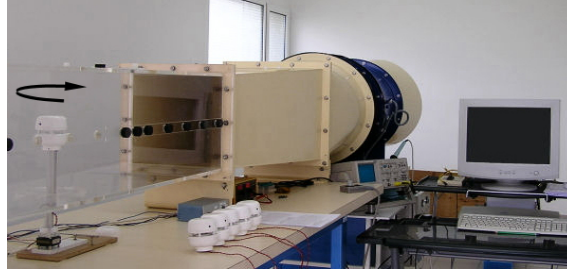


Comparative test in wind tunnels on 360° at 19 knots

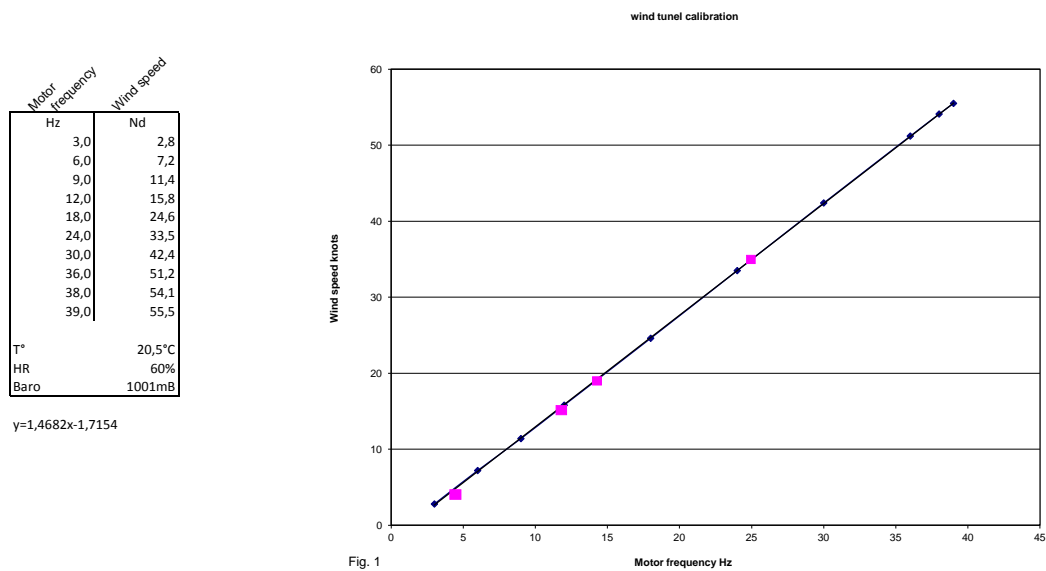
Test bench



The CV7 sensor is placed in the wind tunnel on a rotating bracket which rotates by 9 degrees steps. This is computer controlled. The sensor is aligned in the wind direction and set at 0 degrees. 40 mesure points are logged with both angle and speed. Figure 1 shows the wind speed settings (y) to the wind tunnel fan's motor speed (x).

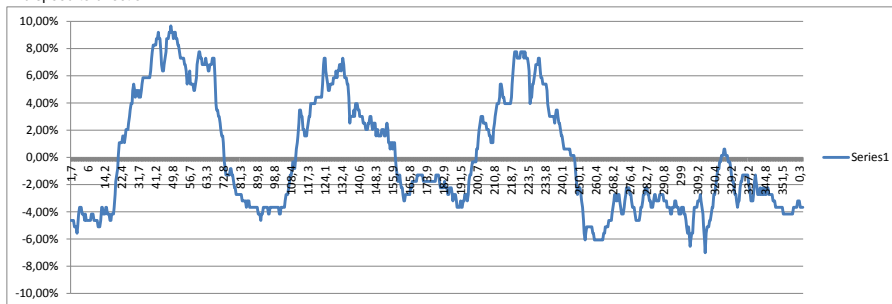
$$y=1.4682x-1.7154$$

The factory setting of the CV7 is done for a 19 knots wind speed . Figure 1 shows the the verification points for 4,15, 19 and 35 knots.



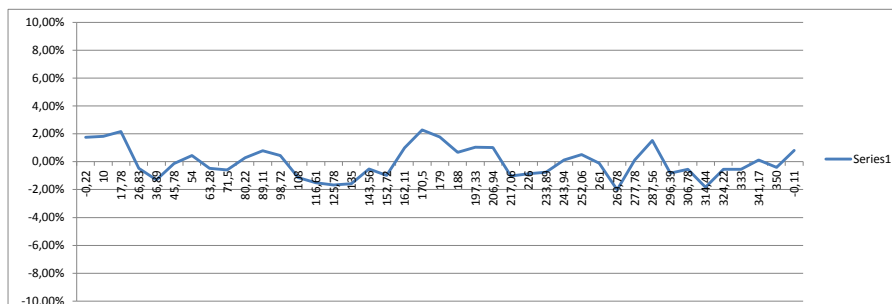
Calibration of DELTALAB wind tunnel:
Measures made in our premises with "Ecole Centrale de Nantes" technical means on July 3rd 2007
Verified 6 July 2012

% error for wind speed to direction



CV3F_2002

Original LCJ Capteur technology widely used under licence by OEM manufacturers



CV7_2011

New LCJ Capteur technology exclusively used for LCJ Capteurs products manufactured in France